



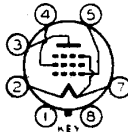
1A5-GT/1A5-G

1A5-GT



POWER AMPLIFIER PENTODE

| | | |
|------------------------|--------------------------------|-----------------------|
| Filament | Coated | |
| Voltage | 1.4 | d-c volts |
| Current | 0.05 | amp. |
| Maximum Overall Length | | 3-5/16" |
| Maximum Seated Height | | 2-3/4" |
| Maximum Diameter | | 1-5/16" |
| Bulb | | T-9 |
| Base | Intermediate Shell Octal 7-Pin | |
| Pin 1 - No Connection | | Pin 5 - Grid |
| Pin 2 - Filament + | | Pin 7 - Filament - |
| Pin 3 - Plate | | Pin 8 - No Connection |
| Pin 4 - Screen | | |
| Mounting Position | | Any |



BOTTOM VIEW (G-6X)

AMPLIFIER

| | | |
|---------------------------------|----------|-------|
| Plate Voltage | 110 max. | volts |
| Screen Voltage | 110 max. | volts |
| Total Zero-Sig. Cathode Current | 6 max. | ma. |

Typical Operation and Characteristics - Class A₁ Amplifier:

| | | | |
|------------------------|-------|-------|--------------|
| Plate | 85 | 90 | volts |
| Screen | 85 | 90 | volts |
| Grid * | -4.5 | -4.5 | volts |
| Peak A-F Grid Volt. | 4.5 | 4.5 | volts |
| Zero-Sig. Plate Cur. | 3.5 | 4.0 | ma. |
| Max.-Sig. Plate Cur. | 3.5 | 4.0 | ma. |
| Zero-Sig. Screen Cur. | 0.7 | 0.8 | ma. |
| Max.-Sig. Screen Cur. | 1.0 | 1.1 | ma. |
| Plate Res. | 0.3 | 0.3 | approx. ohms |
| Transcond. | 800 | 850 | μmhos |
| Load Res. | 25000 | 25000 | ohms |
| Total Harmonic Dist. | 10 | 7 | % |
| Max.-Sig. Power Output | 100 | 115 | mw |

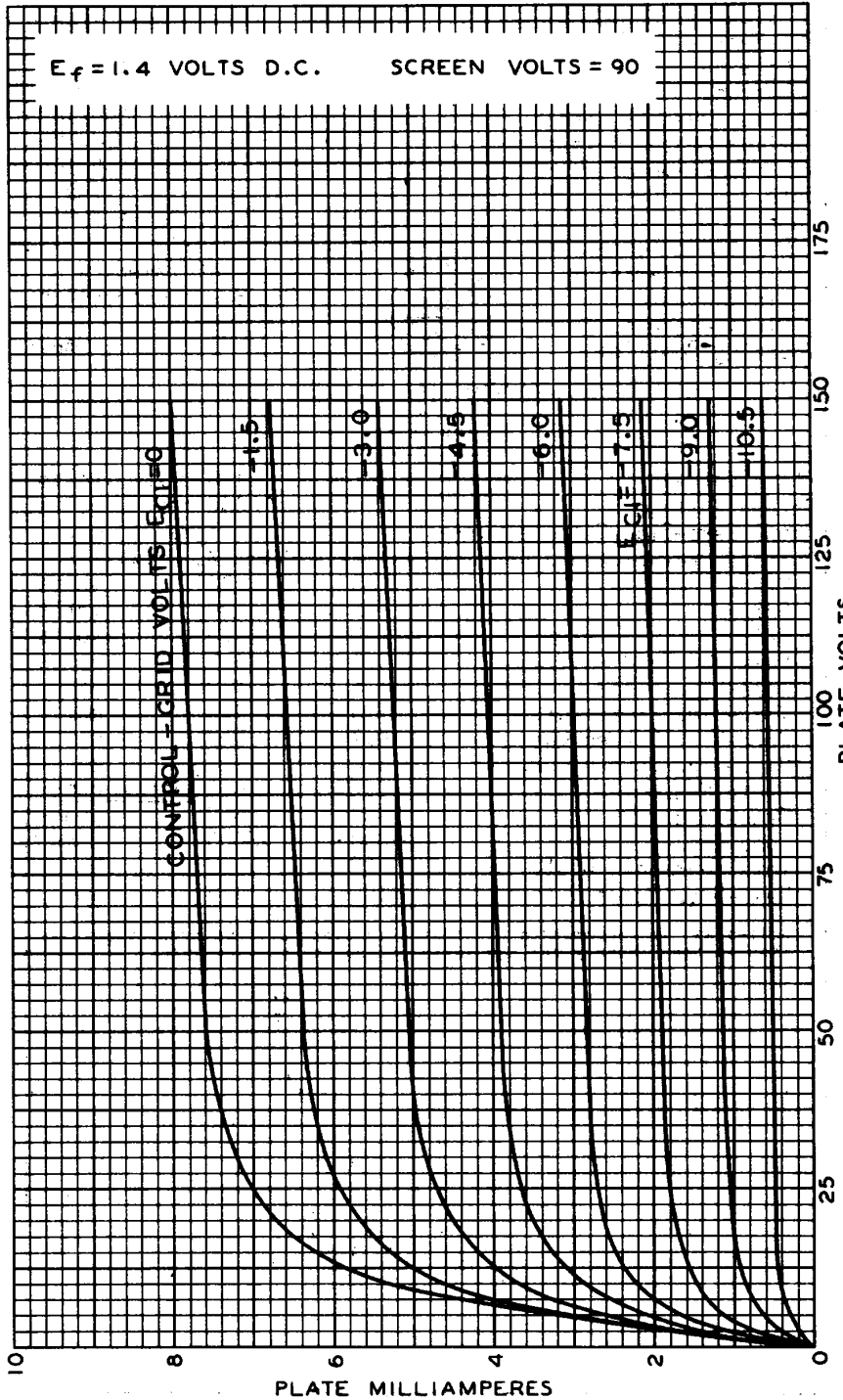
* Self-bias is recommended so that grid bias will be proportionately less as the B-supply voltage falls off during battery life.

1A5-GT



1A5-GT

AVERAGE PLATE CHARACTERISTICS



NOV. 10, 1938

RCA RADIOTRON DIVISION
RCA MANUFACTURING COMPANY, INC.

92C-4998