

MECHANICAL DATA

Ambient Temperature Range (Non-Operative) -40 to +100 Degrees C
 Mounting Between Standard Rectangular R F
 Choke Flanges in 0.400" x 0.900" ID x 0.050" Wall Waveguide

ELECTRICAL DATA

Frequency Range 8490 to 9578 mc

IGNITOR CHARACTERISTICS

Ignitor Open Circuit Voltage -650 Volts d c Mir
 Ignitor Current 100 μ a
 Ignitor Voltage Drop 200 to 375 Volts

LOW POWER LEVEL UNFIRED CHARACTERISTICS

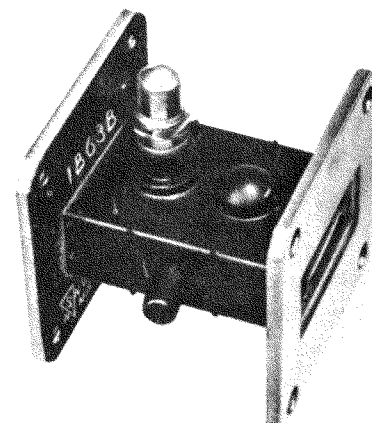
Insertion Loss 0.7 db Max.
 Ignitor Interaction 0.2 db Max.

HIGH POWER LEVEL FIRED CHARACTERISTICS

(Flat) Leakage Power (40 KW) 40 mw Max.
 Spike Leakage Energy (40 KW) 0.2 erg
 Recovery Time (200 KW) 10 μ sec at 3 db
 Arc Loss (4 KW) 0.8 db Max.
 Position of VSW Minimum 0.065 \pm .007 Inch

QUICK REFERENCE DATA

The Sylvania Type 1B63B is a long life fixed-tuned broad band transmit-receive tube which is equivalent to and interchangeable with the Type 1B63A. It is designed for use with the Sylvania Type 1B35A or the 1B37A. The 1B63B is rated for 1000 hours life as against the 500-hour rating of the 1B63A.



**SYLVANIA ELECTRIC
 PRODUCTS INC.
 ELECTRONICS DIVISION
 WOBURN, MASS.**

*Prepared and Released By The
 TECHNICAL PUBLICATIONS SECTION
 EMPORIUM, PENNSYLVANIA*

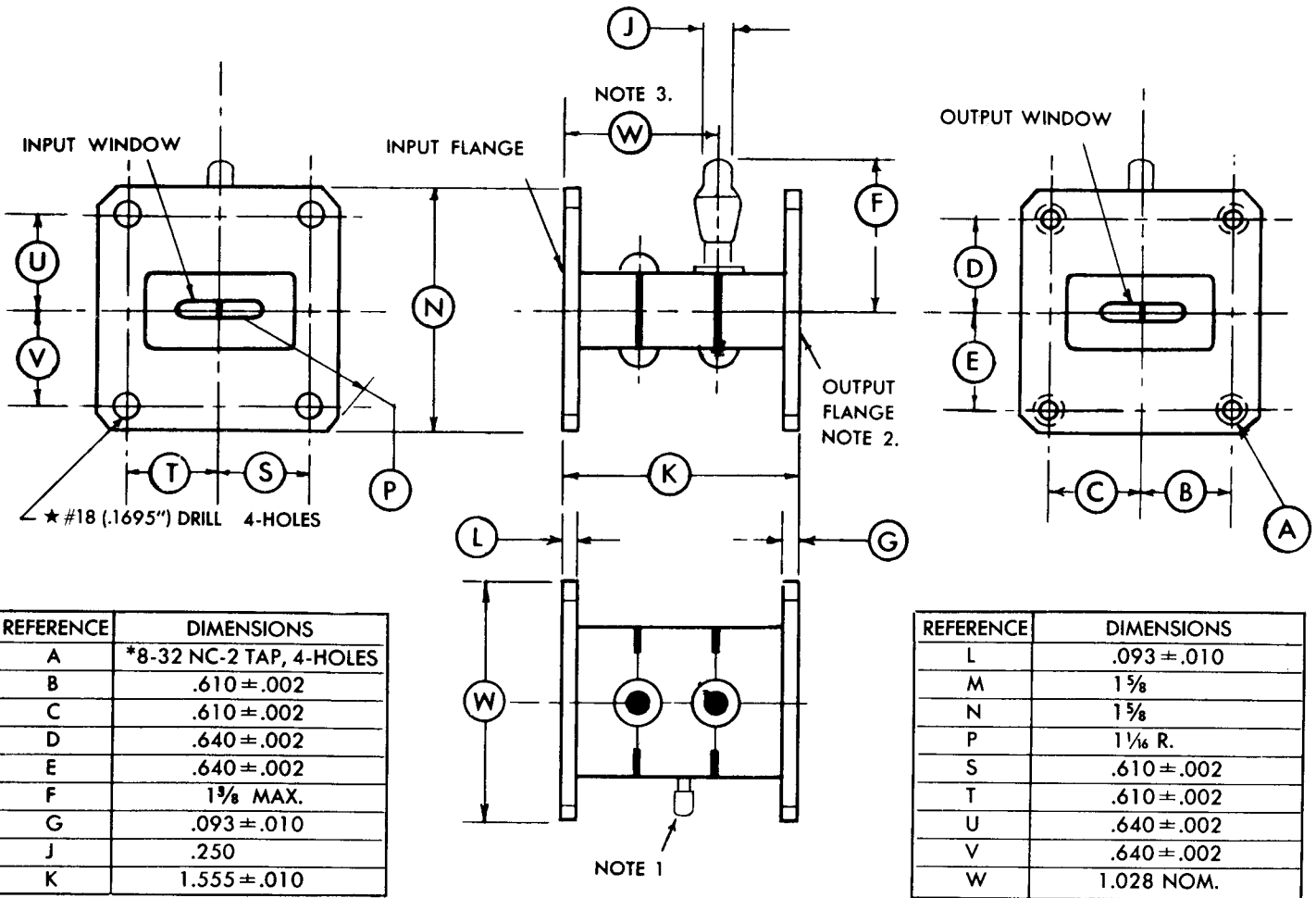


DIAGRAM NOTES:

1. The exhaust tube must not extend beyond the flanges more than 1/4 inch.
2. The end flanges are parallel planes flat within 0.006" when measured within the area between concentric circles of 1-3/16" and 1 5/8". The area outside of the 1 5/8" circle may measure less than the minimum measured dimension by an additional 0.004".
3. The ignitor terminal falls within an area defined by a reference circle of 3/8" max. diameter located 1.028" nom. from the outside edge of the input flange.