



5557

# 5557 THYRATRON MERCURY-VAPOR TRIODE

## DATA

### Electrical:

#### Filament:

Voltage\* . . . . . 2.5 . . . . . volts  
 Current . . . . . 5.0 . . . . . amp

#### Direct Interelectrode Capacitance:

Grid to Anode (Approx.) . 4.4 . . . . .  $\mu$ f

Peak Voltage Drop (Approx.) 16 . . . . . volts

#### Approximate Control Characteristics:

Anode Voltage . . 40 100 1000 . . . . . volts  
 Grid Voltage . . 0 -2.25 -6.5 . . . . . volts

Ionization Time (Approx.) 10 . . . . . microseconds

Deionization Time (Approx.) 1000 . . . . . microseconds

### Mechanical:

Mounting Position . . . . . Vertical, base down

Overall Length . . . . . 6-3/8"  $\pm$  1/4"

Seated Length . . . . . 5-3/4"  $\pm$  1/4"

Maximum Diameter . . . . . 2-7/16"

Bulb . . . . . S-19

Cap . . . . . Medium

Base . . . . . Medium 4-Pin, Bayonet

### Maximum Ratings, Absolute Values:

PEAK FORWARD ANODE VOLTAGE . . . . . 2500 max. volts

PEAK INVERSE ANODE VOLTAGE . . . . . 5000 max. volts

#### GRID VOLTAGE:

Before Conduction . . . . . -500 max. volts

During Conduction . . . . . -10 max. volts

#### INSTANTANEOUS ANODE CURRENT:

Below 25 Cycles . . . . . 1.0 max. amp

25 Cycles and Higher . . . . . 2.0 max. amp

AVERAGE ANODE CURRENT\*\* . . . . . 0.5 max. amp

SURGE ANODE CURRENT for 0.1 sec. max. . 40 max. amp

INSTANTANEOUS GRID CURRENT . . . . . 0.25 max. amp

AVERAGE GRID CURRENT\*\* . . . . . 0.05 max. amp

COND.-MERCURY TEMP. RANGE<sup>▲</sup> . . . . . 40 to 80 °C

\* Filament voltage must be applied at least 5 seconds before anode voltage is applied.

\*\* Averaged over any 15-second interval.

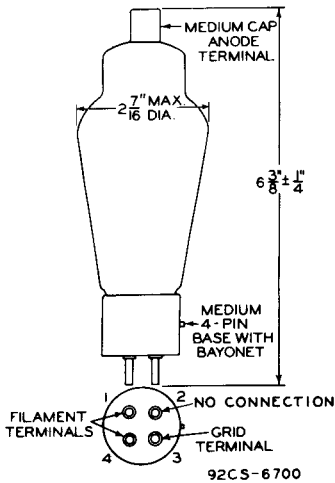
▲ Recommended condensed-mercury temperature 40°C.

5557

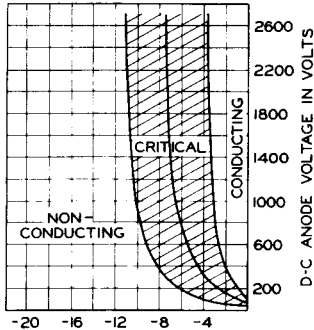


5557

# THYRATRON



## OPERATIONAL REGION OF CRITICAL GRID VOLTAGE



D-C GRID VOLTAGE AT START OF DISCHARGE IN VOLTAGE

92CS-6744