

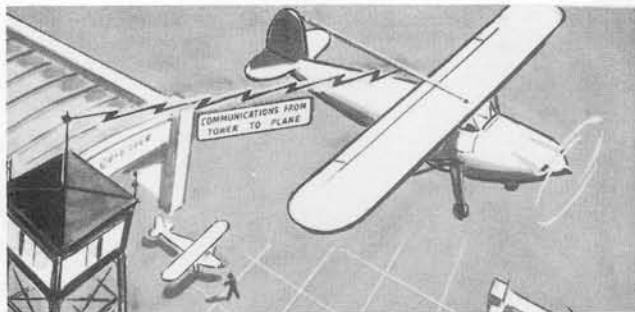
Radio Receiving Set AN/ARR-13 is a small, light weight airborne radio range receiver providing ranges and tower reception.

The receiver operates from 12-14 volts d.c. with plate power supplied from RCA model AVA-126 power supply. This receiver operates in conjunction with radio installation in type L-5 observation planes, when RCA model AVR-20 radio receiver and model AVT-112 transmitter is installed. This receiver covers 195 to 405 kc. with a pre-set 278 kc. channel for airport tower reception. The equipment includes cables for interconnection with above components.

Radio Receiver R-76/ARR-13 is the commercial Satchell Type 512 Radio Receiver.

No special test equipment is required for maintenance and tuning.

Army Supply Program requirements as of 1 December 1944 were 3,850 for the calendar year 1944.



Installed in light aircraft, Radio Set AN/ARR-13 provides facilities for the reception of range signals and tower control communications.

POWER SUPPLY	12-14 VOLTS D.C.
FREQUENCY	195-405 KC
TYPE OF SIGNAL	MCW

TUBE COMPLEMENT			
NO.	TYPE	NO.	TYPE
1	14A4	1	14B6
2	14A7	1	14J7



Interconnecting Cable



Radio Receiving Set AN/ARR-13

RADIO RECEIVING SET AN/ARR-13

TOTAL WEIGHT 5 LBS.

Component	Nomenclature	Size	Weight
Radio Receiver	R-76/ARR-13	4" x 4" x 7"	3 Lbs.
Cord	CX-180/ARR-13		

and includes 20,000 ohm resistor for power supply modification.

March 1945