

UNCLASSIFIED

Radar Sets AN/CPN-12 and AN/CPN-11 comprise an air-transportable ground Loran chain which provides a signal for position "fixing" by aircraft equipped with Radar Set AN/APN-4 or Radar Set AN/APN-9. In operation, two AN/CPN-11's are used as "slave" stations and are triggered by the double master station AN/CPN-12.

This lightweight equipment is intended for use in operations where time will not permit the installation of heavier conventional fixed or mobile Loran equipment, and in other installations where the latter equipment is considered impracticable for other reasons.

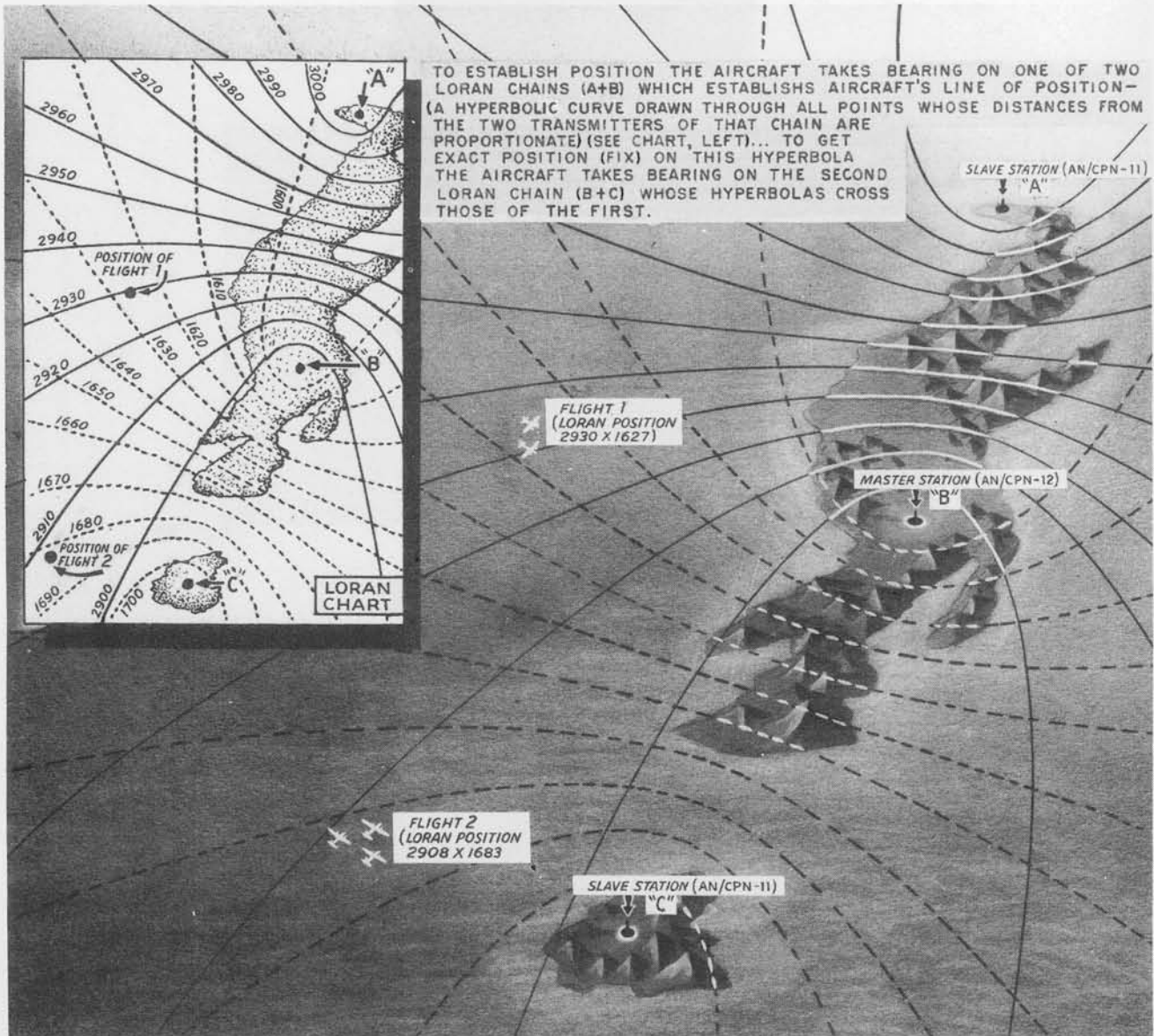
The standard airborne Loran receiving equipment AN/APN-4 is used as the basic timing device. Each station includes 100 percent spare components with 200 percent spare power supply components. Equipment is designed for continuous 24 hours per day operation for at least three months. Components are interchangeable in AN/CPN-11 and AN/CPN-12.

Test equipment required for the operation and maintenance of AN/CPN-12 includes General Radio Wave

Meter (566A), Simpson Test Meter (IS-189), Oscilloscope 3" Dumont 224A, Signal Generator I-72, and Hickok Model 110.

POWER INPUT	115 VOLTS, 400 CYCLES
POWER OUTPUT	25 KW. (PEAK)
FREQUENCY	1700 to 2000 KC
TYPE OF SIGNAL	PULSE

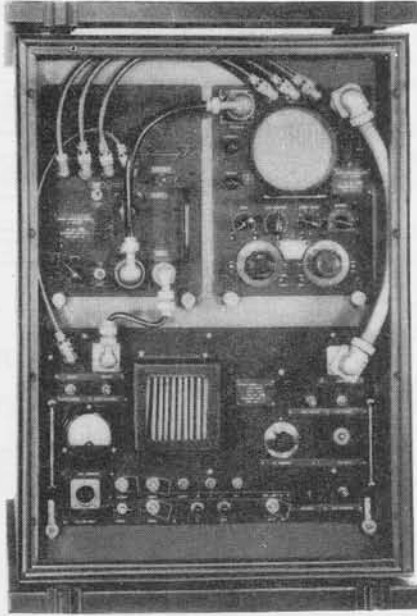
TUBE COMPLEMENT			
NO.	TYPE	NO.	TYPE
2	5D21	20	6B4G
2	807	8	6SJ7
6	3B24	4	2050
96	6SN7GT	2	6V6GT/G
10	5U4G	4	5CP1
8	OC-3/VR-105	16	6SK7GT/G
24	6AC7	4	6SA7GT/G
36	6H6GT/G	8	2X2
40	6SL7GT		



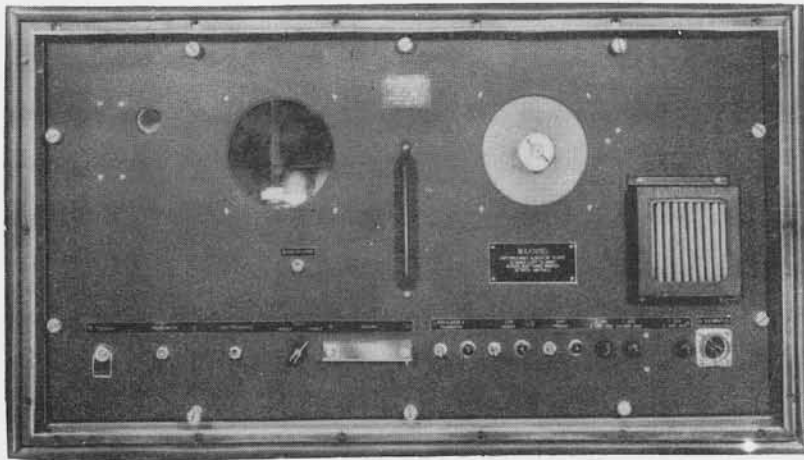
Radar Set AN/CPN-12 and AN/CPN-11 constitute an air transportable ground Loran chain which provides properly equipped aircraft with means whereby they may obtain a fix of position at any time within the range of 200 miles by day and 400 miles at night.

UNCLASSIFIED

UNCLASSIFIED



Timer Cabinet



Radar Transmitter

RADAR SET AN/CPN-12

TOTAL WEIGHT 18 000 LBS.

Component	Nomenclature	Size	Weight
Radar Transmitter	T-82/CPN (2 each)	24" x 24" x 40"	101 Lbs.
Synchronizer	SN-16/CPN (4 each)	10" x 24" x 29"	50 Lbs.
Case	CY-187/CPN (2 each)	30" x 30" x 18"	62 Lbs.
Antenna Mast	AB-48/C (4 each)	60' long	750 Lbs.
Power Unit	PU-6/TPS-1 (4 each)	20" x 20" x 30"	225 Lbs.
Case	CY-173/CPN (4 each)	29" x 21" x 24"	
Antenna Assembly	AS-130/CPN		
Indicator	ID-102/CPN (4 each)	9" x 12" x 20"	345 Lbs.
Ground Kit	MX-209/CPN		600 Lbs.
Junction Box	J-111/CPN (2 each)	2" x 3" x 15"	5 Lbs.
Junction Box	J-110/CPN (2 each)	2" x 3" x 15"	5 Lbs.
Timer Cabinet Assembly	CY-249/CPN (4 each)	21" x 24" x 29"	20 Lbs.
Junction Box	J-112/CPN (3 each)	2" x 15"	5 Lbs.
Antenna Coupling Unit	CU-76/CPN (2 each)	10" x 15" x 20"	30 Lbs.
Antenna Coupling Unit	CU-77/CPN (2 each)	6" x 6" x 6"	3 Lbs.
Radar Receiver	R-133/CPN (4 each)	9" x 12" x 20"	25 Lbs.

and includes set of interconnecting cables and fittings including r-f transmission line.